

## Here's what our customers are saying:

*"The report and advice provided by the IAC and Energize Delaware played an important role in guiding the Church's efforts to 'green' our campus. It helped us prioritize improvements and identified programs available through Energize Delaware and the State of Delaware to help fund the projects."*

- Jim Newsom, First Presbyterian Church of Newark

*"As a non-profit assisted living community, providing high quality, affordable care for seniors is our primary concern. The IAC energy assessment recommended a number of improvements to our building that would reduce our energy usage while enhancing the comfort and health of our residents. Energize Delaware helped us understand the recommendations, identify additional incentives to leverage project funds, and worked with us to help finance the efficiency measures."*

- Richard Stat, President  
The Lorelton Foundation

*"The assessment from the IAC has been of great help to us and allows us to focus on the most important measures. We have put many of the recommendations into our capital budget and expect to be implementing them soon."*

- Katie Soja Johnson, Operations Director  
Ronald McDonald House of Delaware



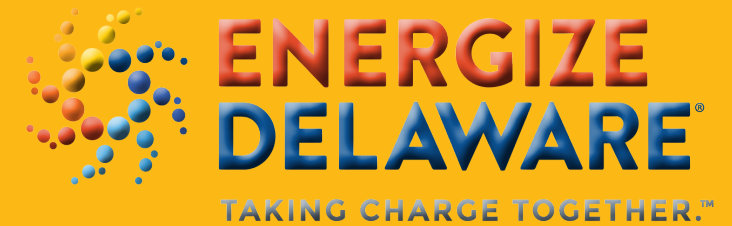
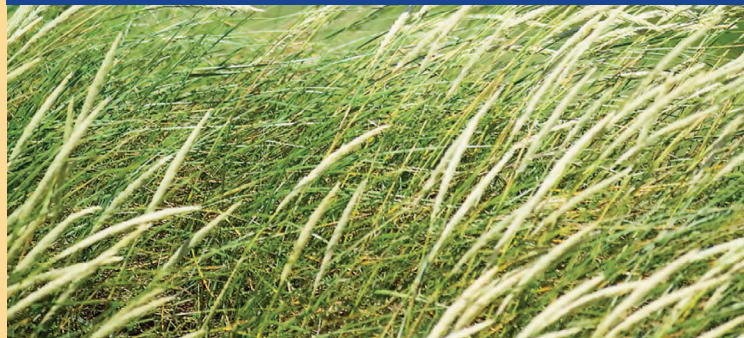
Energize Delaware is an initiative created by the State of Delaware to foster a sustainable energy future through conservation, efficiencies, and the use of renewable energy sources.



500 West Loockerman Street  
Suite 400

Dover, DE 19904  
(302) 883-3048

[www.EnergizeDelaware.org](http://www.EnergizeDelaware.org)



## Energy Assessment Program for:

- ◆ Non-Profits
- ◆ Local Governments





# Energy Assessments

From the University of Delaware IAC and Energize Delaware

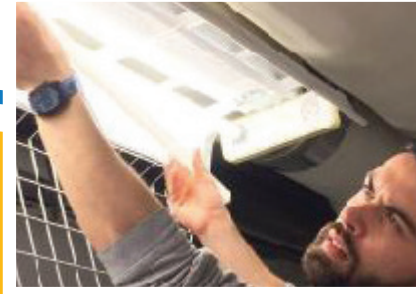
The goal of the Energy Assessment Program is to help non-profits and local governments reduce their energy bills by improving the efficiency of their operations and increasing the use of renewable energy.

## WHAT IS AN ENERGY ASSESSMENT?

An energy assessment is an important first step in understanding your energy usage, by putting you on the path to save money on your monthly electricity and energy bills. Energy assessments find energy saving solutions that, once addressed, make your buildings more energy efficient and comfortable.

## WHO DOES THE ASSESSMENT?

The Industrial Assessment Center (IAC) at the University of Delaware, with the support of Energize Delaware, provides this service to most any type of non-residential buildings owned by a non-profit or local government in Delaware.



## WHAT DO YOU GET?

Most buildings visited by the University of Delaware's IAC save agencies 10% - 30% on energy bills!

- Recommendations ranked by the highest-rate-of-return, including no cost options if any
- Energize Delaware Low Interest financing options
- Increased building comfort levels
- Longer equipment lifespan
- Improved building operations

## HOW DO WE DO IT?

- Assess utility bills & measure energy usage
- Complete light level testing
- Analyze HVAC system
- Assess building envelop and insulation levels
- Thermal imaging testing
- Review operations and maintenance plans
- Perform data logging

## WHO IS ELIGIBLE?

Any non-residential building is eligible for an assessment, including non-profit agencies and local governments.

## OK, SO WHAT'S THE COST?

Energize Delaware covers 90% of the cost. Actual total cost will range from \$200 to \$1,600 depending on energy usage.

## HOW TO GET STARTED?

To discuss this program please contact Energize Delaware, at 302-883-3048, or by email at: [Athena.Bi@deseu.org](mailto:Athena.Bi@deseu.org).

Twitter: @EnergizeDel

Facebook: @EnergizeDelaware

Instagram: @energize\_delaware

