

Energize Delaware Programs

Empowerment Grant – The Empowerment Grant Program remains very active making our first grant awards for the Large-Scale and Community-Scale Grants. The Grant Review Committee has awarded \$771,450 to date. Among the grants awarded Habitat for Humanity in all three counties will be running a statewide refrigerator replacement and recycling program for \$500,000. In addition, Sussex County Habitat for Humanity was awarded \$100,000 for a program to provide insulated skirting for manufactured homes in Sussex County. Yet another grant was given to Wilmington Senior Center to retrofit and install new energy savings systems at Lafayette Court for senior living. Also, a grant was awarded to Kingswood community center to help with DIY weatherization and energy education efforts on the Eastside of Wilmington. We continue to review community-scale applications this Fall and will be launching another Large-Scale grant cycle in October for another \$1 million for a larger scale project. Please visit our website: www.empowermentgrantde.org and “Like” us on Facebook.



COVID-19 Utility Relief Fund – In June 2020, we executed a contract with Catholic Charities to deliver the COVID-19 Utility Relief fund. Participation in this program started slow but has been ramping up over the past two months. This funding helps clients that fall between gaps in funding from other programs. The funds are paid directly to the utility provider to assist with past due bills and avoid utility service disconnection. To date, 35 clients have been assisted from this fund with \$185,000 remaining.

ZeMod – On July 31, our third ZeMod home, for Ms. Alviset was moved from the Beracah site, our first model home, to Ms. Alviset’s property in Harrington. Beracah is completing site work and exterior finishes. This ZeMod for Ms. Alviset replaces an older mobile home that was causing numerous health and safety issues due to its poor condition—that home was demolished. Ms. Alviset will move into her new home sometime in October 2020. There are several other buyers in the



pipeline with some interest in the Knoll Acres model. USDA is over a year behind on their loan application reviews. Milford Housing is evaluating conventional financing products for interested buyers. Greenwood development is close to being permit ready; MHDC is waiting on final review and comments from the Town and then will send plans to contractors for pricing needed for construction financing. Utility PV interconnection has been slow for the Pleasanton model and the Knoll acres model—we are working to get this resolved and finalized. Interconnection application for Ms. Mulegwa will be submitted to Delmarva Power once the electric bill is put in her name. Energy Savings data is being collected and analyzed by VEIC and will be loaded into the Energy Orbit Energy Savings Database once interconnection issues are resolved.



Photos are of Ms. Alviset’s ZeMod home – Milford-Harrington Highway- Rt. 14

DESEU Program Activity Report – May - August 2020



Lights On – Delaware Strong – The installation of the lights and door to door canvassing has resumed and is being done in a safe manner following COVID-19 safety guidelines. Porch light installations totaled 461 this fiscal year. This program has now served well over 2,200 homes across the State. We are working to get the energy savings data entered in Energy Orbit for this program. HELP Initiative staff will be expanding



this program into other communities once it has been determined that it is safe to do so. The phone call campaign to notify past program participants about COVID-19 testing sites has ended and reached over 950 households to provide important COVID -19 related information.

Photos are of the Milford Crossing Community & Edgemoor Gardens with New Castle Police

Affordable Multifamily Housing Program – New Ecology, Inc., (NEI) continues working with clients on various phases of building upgrade designs, review of RFPs, proposals, and construction phases for clients with completed audits. For new construction projects, DSHA awarded LIHTCs to three of the four projects we supported pre-application: Willows at Old Landing; Diamond Court II; and The Flats, Phase IV. Design will start soon, and the program will continue its support throughout construction. Solomon's Court / 1500-1516 W. 4th Street construction closing was on schedule for the end of August. Quaker Arts and Riverside Apartments are the recipients of the DHSA Construction Loan partnership program; Quaker Arts has closed, and Riverside is scheduled for closing late October – early November. There has been some slow-down of projects due to the COVID-19 virus and virtual site visits for pre-bidding meetings are being incorporated as needed.



Photos above are Diamond Court Pre-Rehab & Site Plan; Harrington; and Lafayette Court High Efficiency Boiler; Wilmington

Energy Assessments for Non-Profits – We now offer free energy assessments for non-profit organizations through this program until the end of the year to assist with COVID-economic relief. Nineteen energy assessments have been completed in FY 20 and Five in FY 21 for non-profit organizations. Assessment reports were delivered to Kirkwood Library, Rockwood Park, Eco Plastics, Delaware City Fire Station and St. Ann's Mission Church. Follow up emails/meetings discussing implementation details, EEIF incentives and low-interest loan offerings after the reports' delivery. UD IAC is currently working with the Habitat for Humanity (Lewes) and Mill Creek Fire Station on potential assessments. LED T8 tubes donated by Phillips Lighting are also being installed by UD students during the assessments.

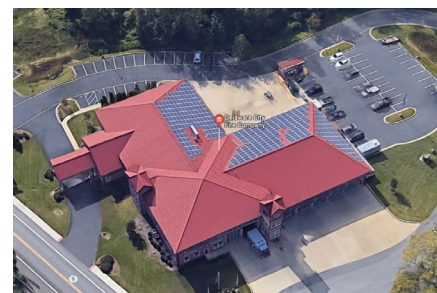


Photo is of the Delaware City Fire station

DESEU Program Activity Report – May - August 2020



Faith Efficiencies – Assessment fees for faith-based organizations have been waived through the end of the calendar year to encourage program participation and help with economic recovery. One energy assessment was completed at Roxana-Zion & Sound UMC on August 1; report is expected in September. Activity has slowed and some have been suspended due to COVID-19. Lisa Locke is encouraging faith-based congregations to participate in virtual energy workshops and is coordinating with Angie Bivens on ways to deliver webinars and presentations. Earth Care/Energy & Climate Displays for houses of worship are still on hold; however, virtual offerings are being explored. *Windows of Hope* is currently suspended.



Climate Conversations - A virtual Zoom Climate Conversation, facilitated by St. Stephens Lutheran Church was held on June 15 with 33 participants. For additional information on future events contact llocke@delawareipi.org A Facebook Live be held on October 14 at 3 pm with the Sierra Club: <https://act.sierraclub.org/events/details?formcampaignid=7013q00001b0weAAA>

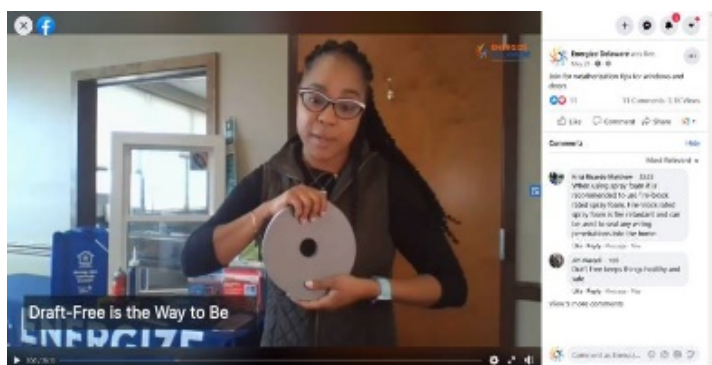
Energize Delaware Farm Program –

EnSave, our program implementer, is currently working with program applicants for incentives funded through this program. Approved efficiency measures include lighting, radiant heaters, building envelope and ventilation. EnSave is working with applicants to maximize funding resources through the Energize Delaware Farm Program and the NRCS EQIP and RCPP programs to leverage additional resources and install more projects. Farm program projects did slow due to COVID-19 but are now ramping back up; August incentive report has not yet been received.

Audits complete to date	61
Technical Assistance Reports Completed to date	20
Incentives Paid this fiscal year (July-August)	\$0
Number of Farms receiving incentives	56
Approved Incentives for projects in process	\$148,119

Pathways to Green Schools Program – Due to the COVID-19 follow up debrief meetings with schools were held remotely. The Fall Kickoff Workshop will also be a virtual event on October 7 and a Healthy Schools Roundtable is scheduled for December 2 in coordination with EPA and the Clean Air Council. We are providing funding for 2 teachers at participating schools to tap into resources through the Center for Green Schools Learning Lab and the Green Classroom Professional Course. Data from the energy audits and follow-up implementation reports is being uploaded into the Energy Orbit Energy Savings Database. Building operator training will now be offered as two online webinars vs. in-person workshops in Winter or Spring 2021. Green Building United has added a section to their resource document for educators to include helpful tools and resources for online teaching and learning during the pandemic - [Pathways Resources document](#)

Home Energy Counseling & Check-up HEC² – Program suspended in-home checkups due to the COVID-19 Pandemic; however, these are resuming in September. A partnership has been formed with Sussex County Habitat for Humanity to start delivering these services and HELP Initiative will also be partnering with this program once the State goes into Phase 3 re-opening for COVID-19. Social media posts featuring energy counseling over the phone and weekly Facebook Live workshops Thursdays at 2 pm are being posted. These offerings have been well received.



DESEU Program Activity Report – May - August 2020



Facebook Live Workshops History

Title	Topic	Air Date	Live Viewers	Current Views	Marketing Boost
JULY					
Summer of Savings	Summer Tips	7/2/20	101	5.3K	Yes
Make it Shine	Lighting	7/9/20	67	4.8K	Yes
Plastic Free Challenge	Recycling	7/16/20	56	2.6K	Yes
Don't Waste a Drop	Water	7/23/20	64	2.5K	Yes
Climate Conversations	IPL	7/30/20	67	2.6K	Yes
AUGUST					
What's Biting You?!?!?	Energy Vampires	8/6/20	152	3.9K	Yes
Efficiency Smart & You	Efficiency Smart program	8/13/20	94	1.5K	Yes
Incentives & Upgrades	Home Performance	8/20/20	77	2.1K	Yes
Be BLOWn Away!	Blower door test	8/27/20	85	1.8K	Yes

Home Performance with ENERGY STAR Program – Energize Delaware has received the Award Crystal for the 2020 ENERGY STAR Partner of the Year Award for Sustained Excellence. This Program has remained open and active during the Virus. We are offering reduced energy assessment fees at 50% for program participants as well as some increased incentives for some measures to assist with the economic recovery for contractors and participants through the end of the calendar year. 73 contractors are enrolled in the program. The contractor scorecard is being updated for website posting.



The Best Practices Working Group (BPWG) held an election for new participants and the new representatives met virtually in August. Site inspections for QA/QC are done virtually and some are starting to occur in person. We will continue to monitor the program and adjust as needed.

Charts below provided by Franklin Energy show a comparison of Assessments and Jobs in the program year over year. Energy Orbit is being updated and we needed to redesign the way data was being collected for this program. We will have more updated info for the next report.

CHART													
HPwES - Assessments													
	July	Aug	Sept	Oct	Nov	Dec	Jan	Feb	Mar	Apr	May	June	Totals
FY14								1	17	15	25	27	85
FY15	16	9	17	47	46	57	60	67	69	59	40	53	540
FY16	34	42	64	90	61	40	70	53	58	78	94	109	793
FY17	119	111	100	76	114	105	124	95	108	135	172	203	1,462
FY18	171	160	160	190	182	97	0	187	176	0	329	189	1,841
FY19	61	79	25	92	51	69	67	78	108	108	130	167	1,035
FY20	186	127	76	111	85	95	119	74	245	92	80	121	1,411
FY21	214	169											383

DESEU Program Activity Report – May - August 2020



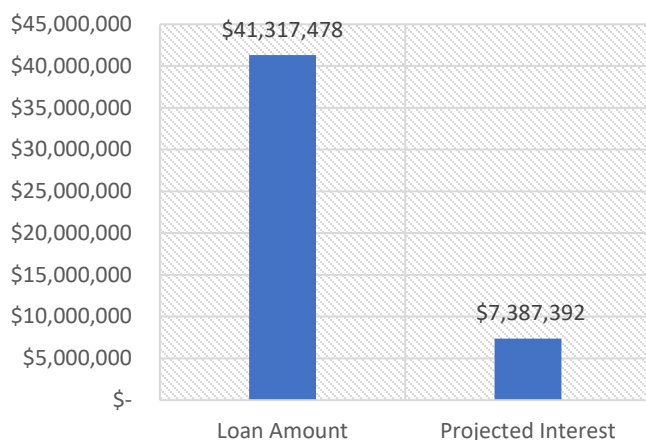
HPwES - Jobs													Totals
	July	Aug	Sept	Oct	Nov	Dec	Jan	Feb	Mar	Apr	May	June	
FY14	0	0	0	0	0	0	0	0	4	9	6	7	26
FY15	4	12	10	2	11	12	15	32	27	27	24	21	197
FY16	14	7	18	20	24	24	20	34	32	25	26	16	260
FY17	40	34	31	43	58	57	82	62	76	76	110	164	833
FY18	146	181	180	159	220	133	0	37	113	120	175	89	1,553
FY19	45	54	153	12	45	46	81	34	57	46	64	106	743
FY20	122	33	114	81	121	69	60	115	51	147	76	89	1,078
FY21	132	92											224

Energyize Delaware Loan Programs:

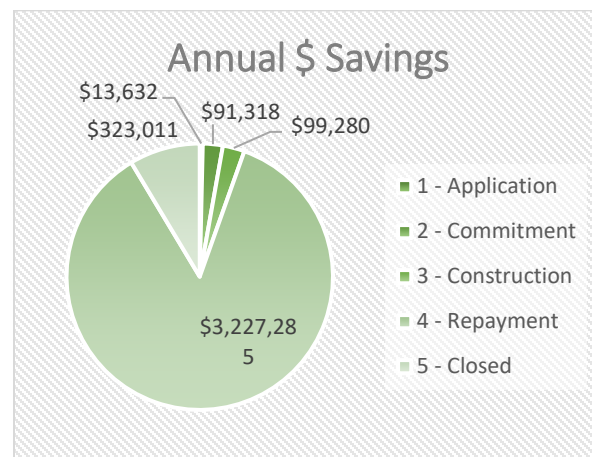
Residential Solar Loan Program – To date, 244 loan applications have been submitted; 11 applications were rejected due to credit score or debt to income ratio and four were withdrawn. This program has approved loans totaling \$3,617,478; loans totaling \$3,216,775 have completed their projects and moved into repayment status and 26 projects totaling \$381,103 are under construction. Six loans missed payments in August, and 23 loans have been repaid. Data has been entered in Energy Orbit Statewide Energy Savings Database. Applications for loans has increased over the summer with more than 30 applications submitted May-August.

Residential Energy Efficiency Loan Program – To date, 114 loan applications have been submitted totaling \$1,030,586; 82 have been completed and paid to contractors totaling \$997,439 and 2 are under construction totaling \$27,897. 25 applications were rejected due to high debt to income ratio and one was withdrawn. Four loan payments were outstanding for August and 9 loans have been repaid in full. Activity on the energy efficiency loan program has increased over the summer months with increased interest in A/C replacements and full HVAC upgrades. We have also seen an increase in air sealing and insulation measures. This program is being tracked in the Energy Orbit Energy Savings Database in conjunction with the Home Performance with ENERGY STAR Program.

**Loan Amount & Interest
Earned/Being Earned**
(Projects in repayment & closed ones
only)



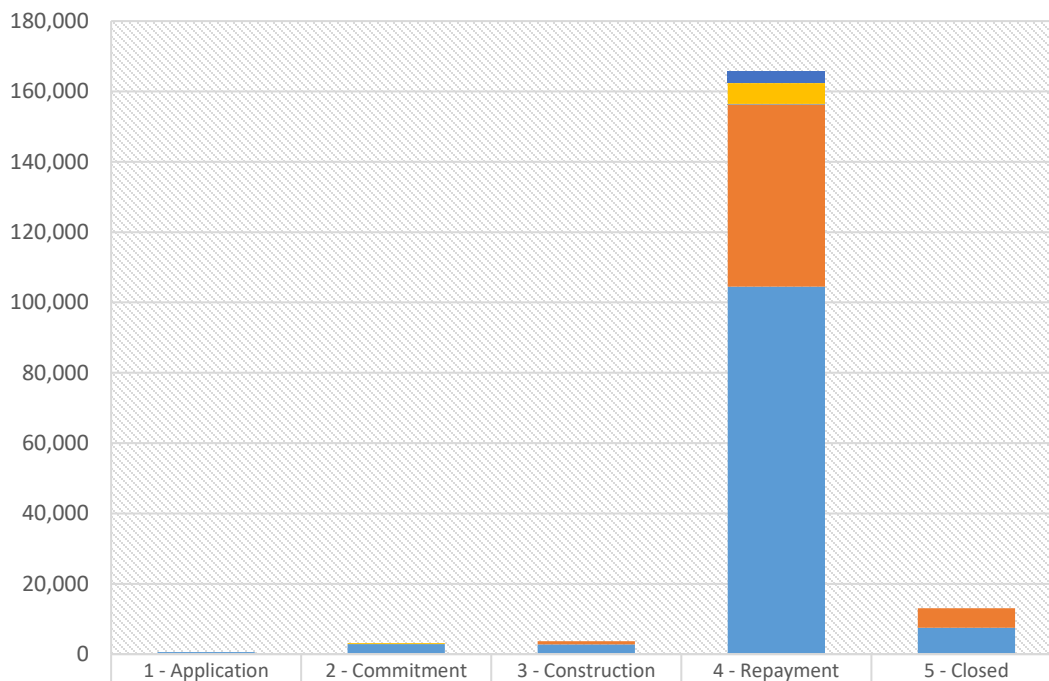
Low-Interest Commercial Loan Program – The total amount of this loan portfolio is \$41,317,478. We have 71 loans in repayment status totaling \$34,271,855 and four projects are under construction totaling \$2,190,339. Data below is from our Loan Tracking Spreadsheet and reflects data from the Commercial Loan Program.



DESEU Program Activity Report – May - August 2020



Annual Energy Savings in MMBTU



	1 - Application	2 - Commitment	3 - Construction	4 - Repayment	5 - Closed
■ Diesel (MMBtu)	-	-	-	3,322	-
■ Propane (MMBtu)	-	273	-	5,901	-
■ Oil (MMBtu)	-	-	-	351	-
■ Gas (MMBtu)	-	-	981	51,633	5,518
■ Electricity (MMBtu)	620	2,869	2,732	104,504	7,525

DESEU Program Activity Report – May - August 2020



Energy Saving Data From New Completed Projects Current Calendar Year					
Program	Energy Savings Annual	Energy Savings Lifetime	Gross Energy Savings (MMBTU) Annual	Gross Energy Savings (MMBTU) Lifetime	Annual Greenhouse Gas Emission Avoided Metrics Tons
Home Performance - Jobs	\$ 184,310	\$ 3,686,208	2,181.71	43,634.20	136.21
Home Performance -Audit - DIMs	\$ 46,522	\$ 930,432	55.16	1,103.20	20.40
Home Energy Counseling & Check-Up	\$ 14,376	\$ 287,512	361.20	4,334.45	0.19
Revolving Loan	\$ 161,118	\$ 3,222,368	6,760.24	135,204.86	961.18
Farm Program	\$ 11,925	\$ 238,500	519.00	10,380.00	36.03
Residential Solar Loan	\$ 14,498	\$ 289,963	364.28	7,285.67	55.82
Lights-On	\$ 10,882	\$ 217,630	273.41	5,468.22	41.90

Potential Saving Found through Energy Audit Current Calendar Year					
Program	Energy Savings Annual	Energy Savings Lifetime	Gross Energy Savings (MMBTU) Annual	Gross Energy Savings (MMBTU) Lifetime	Annual Greenhouse Gas Emission Avoided Metrics Tons
Energy Audit for Non-profit	\$ 162,863	\$ 3,257,260	10,745.60	214,912.00	985.55
Pathway to Green Schools	\$ 28,267	\$ 565,340	1,016.90	20,338.00	102.85
Faith Efficiencies	\$ 759	\$ 15,189	9.33	186.58	1.45
Farm Program	\$ 46,524	\$ 930,480	83.89	1,677.80	196.05
Affordable Multifamily Program	\$ 54,904	\$ 1,098,080	6,885.83	137,716.64	217

Note:

- Green cell indicate that's revenue or generation from solar.
- Light blue cell indicated the Greenhouse Gas Emission reduction is estimated based on last year's Emission Factor (Metric Tons GHG/MMBTU)
- Light pink cell indicate the formular of this cell is $GHG\ Emission = Gas_{(Therm)} * (Gas_CO2_Factor + Gas_Sox_Factor * Gas_Nox\ Factor) + Propane(Gal) * (Propane_CO2_Factor + Propane_Sox_Factor * Propane_Nox\ Factor) + Electricity(kWh) * (Electricity_CO2_Factor + Electricity_SO2_Factor + Electricity_NOx_Factor)$
- Grey cell indicate the formular of that cell is $kwh * 0.1358$

Lifetime energy saving is calculated as 20 years of energy saving annual.
Average retail rate for residential electricity in DE is \$13.58 cents.